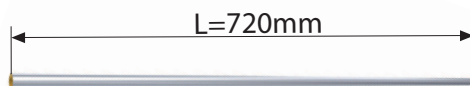


LB = lengte van de handdoekbeugel
LB = Largeur du porte-serviettes
LB = Breite des Handtuchbügels
LB = Width of the towel rail



L	X=Y-2	LB
720	6	457
720	5	382
720	4	307
720	3	232

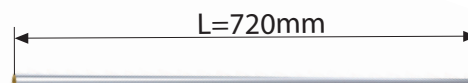
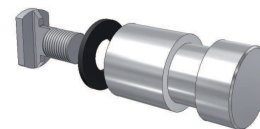
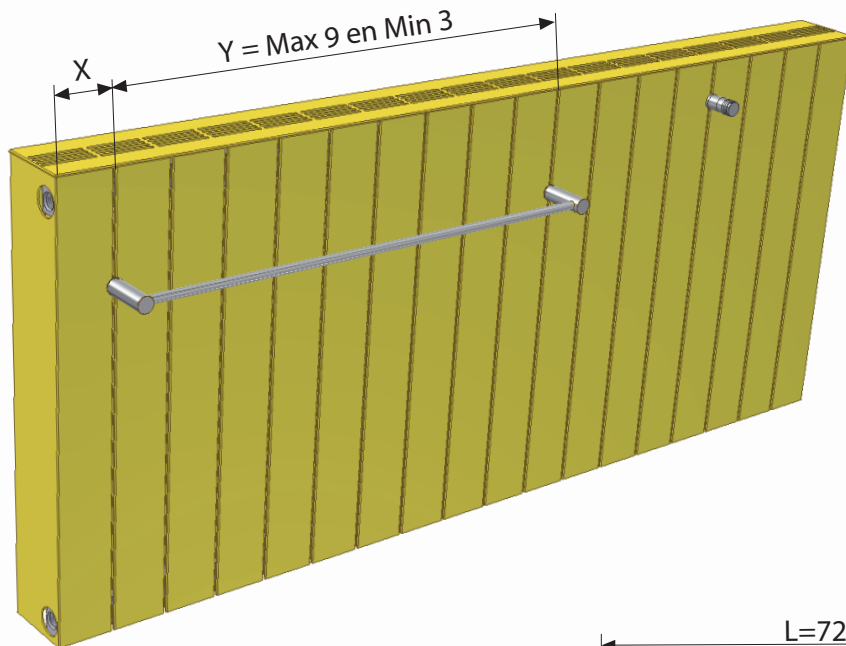
MONTAGEVOORSCHRIFT

MOUNTING INSTRUCTIONS

MONTAGE-ANLEITUNG

INSTRUCTIONS DE MONTAGE

Luxe Acc. Zaros / Veltis H100



LB = lengte van de handdoekbeugel
LB = Largeur du porte-serviettes
LB = Breite des Handtuchbügels
LB = Width of the towel rail

L	Y	LB
720	9	682
720	8	607
720	7	532
720	6	457
720	5	382
720	4	307
720	3	232