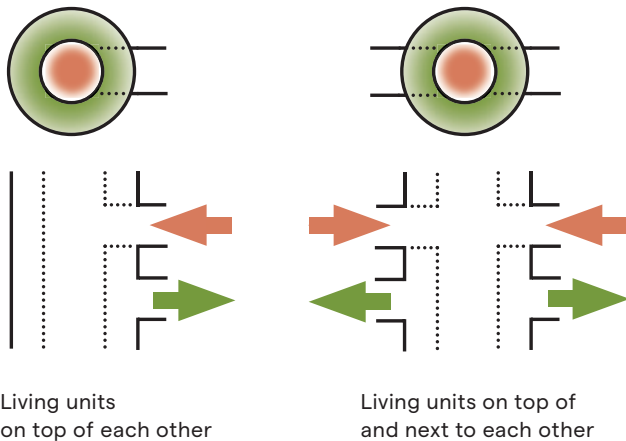


PolyFlow collective ventilation duct

Description

The PolyFlow system consists of a concentric pipe for the supply and discharge of ventilation air. Fresh air enters through the exterior pipe, whilst the dirty discharge air is evacuated through the interior pipe.

On every floor, up to two apartments with their separate ventilation units (HRVU) can be connected to the air duct (Ø160mm) (90°-180° in relation to each other), and that up to a height of twelve floors. The supply of the fresh outside air and discharge of the dirty inside air is managed on the roof.



Technical characteristics

The PolyFlow system is available in six set diameters, depending on the ventilation flow required. The air ducts are manufactured to suit the height of the individual floors. Clear marking of the individual intermediate sections is very convenient for the installer in the course of the installation.

Diameters (mm)	Max. flow (m ³ /h)
Ø 220-340	550
Ø 250-380	825
Ø 300-450	1200
Ø 340-510	1375
Ø 380-550	1650
Ø 420-620	2000

Technical characteristics

The PolyFlow system guarantees both the interior air quality as well as the quality of the overall system:

- The entire PolyFlow system is manufactured from type 304 stainless steel.
- The supply of the fresh outside air and the discharge of the dirty inside air is managed on the roof, whilst ensuring a minimum distance between both (exact distance will depend on the project and the requirements in force).
- The roof-top section is fitted with a storm collar and cowl. Other solutions are available upon request.
- Fitted with sleeves to ensure adequate clearance during the installation.
- Fitted with an inspection hatch for maintenance purposes, incl. condensate drainage (6/4"), drain trap to be supplied separately.
- Fitted with a combined fire and smoke damper (type SC60-COSMO) between the ventilation unit and the PolyFlow system, which also acts as a non-return valve.



Fire and smoke damper



Inspection hatch incl. condensate drainage

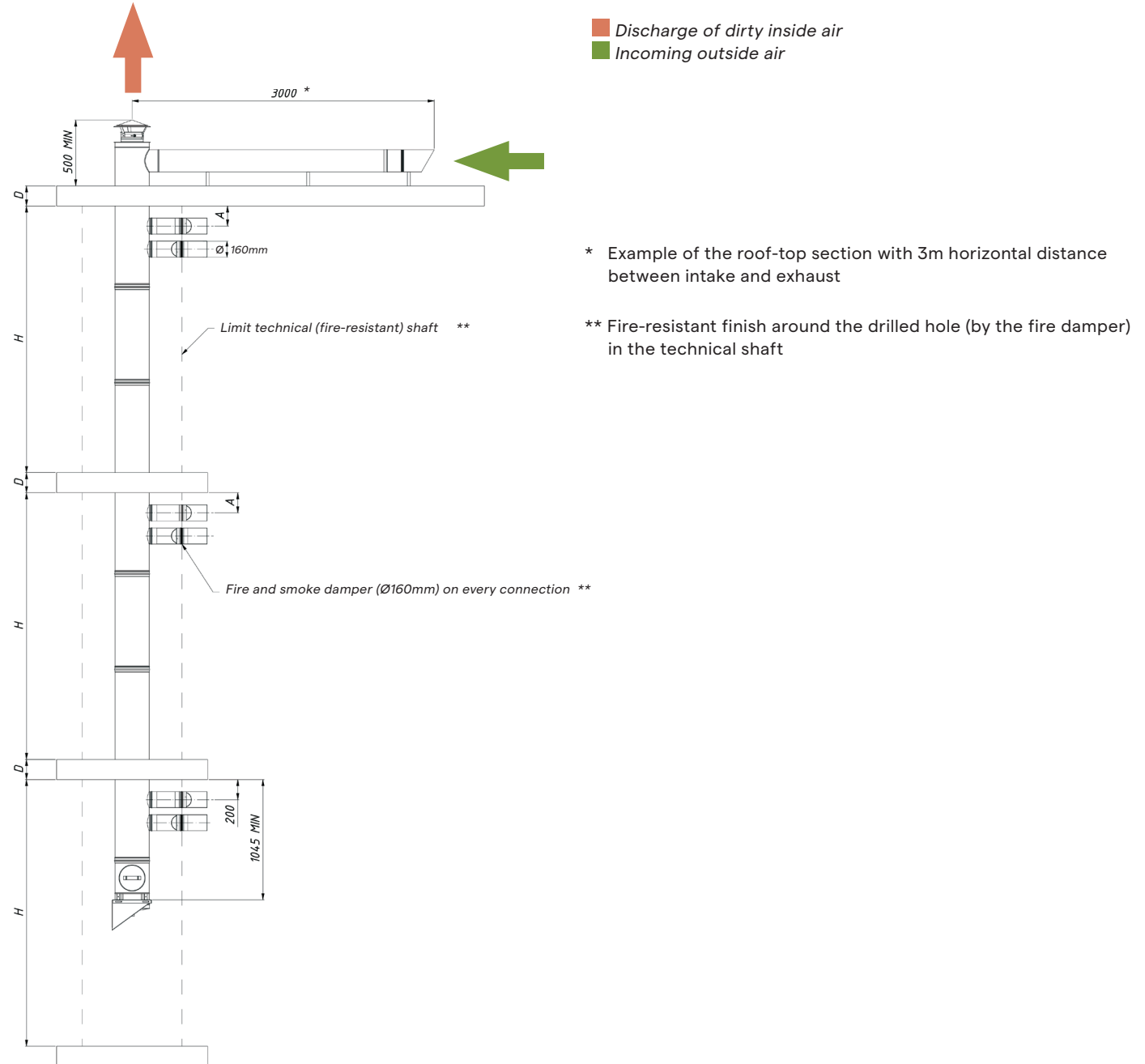
Dimensional drawings and connections

Dimensions technical shaft:

PolyFlow diameters (mm)	Technical shaft recommended dimensions (mm)	Technical shaft minimum dimensions (mm)
Ø 220-340	440 x 440	390 x 390
Ø 250-380	480 x 480	430 x 430
Ø 300-450	550 x 550	500 x 500
Ø 340-510	610 x 610	560 x 560
Ø 380-550	650 x 650	600 x 600
Ø 420-620	720 x 720	670 x 670

Dimensional drawings and connections

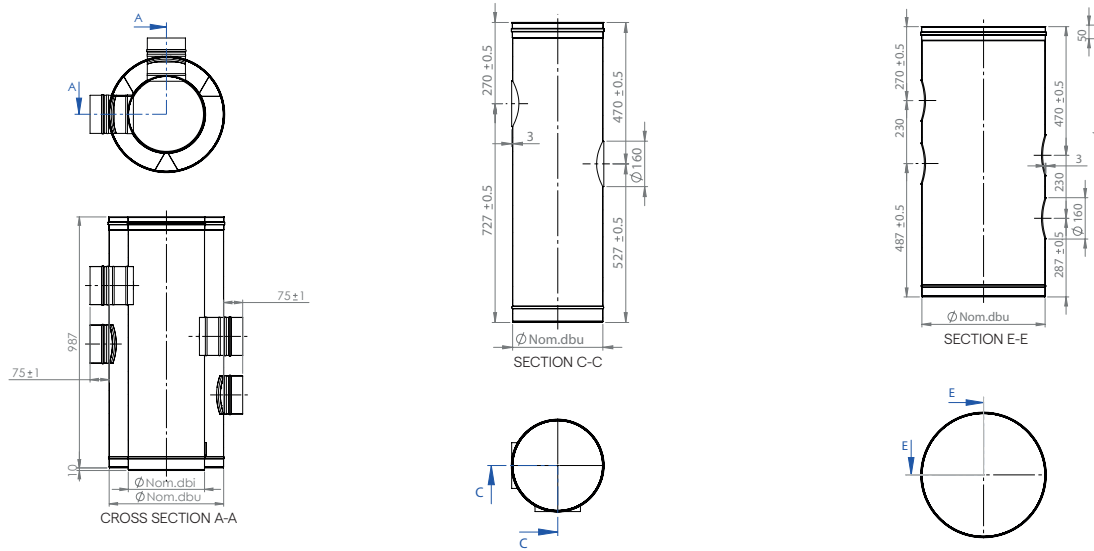
Example of set-up: Other sizes are measured by Vasco on the building site



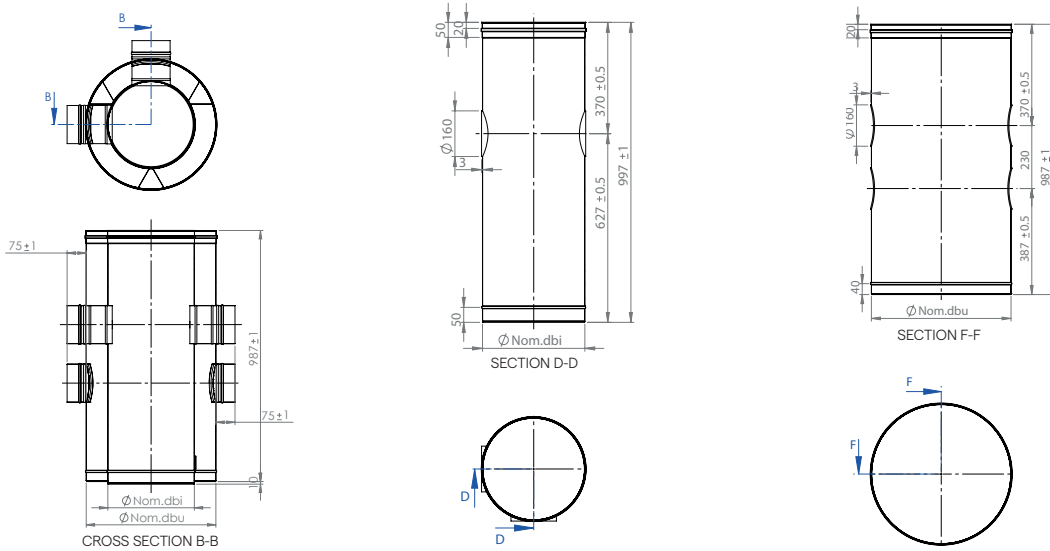
Dimensions in mm

Detail ventilation connection in case of 2 ventilation units at 90°

For PolyFlow system \varnothing 220-340, \varnothing 250-380 and \varnothing 300-450



For PolyFlow system \varnothing 340-510, \varnothing 380-550 and \varnothing 420-620



Dimensions in mm