

# ENERGY PLUS

## DESCRIPTION

Vasco Energy Plus type ventilation units are of the type with heat recovery and are suitable for permanent, continuously running mechanical ventilation.

The Energy Plus is available in 2 versions:

- For ceiling installation ENY-P1-Ceiling, ENY-P2-Ceiling, ENY-P3-Ceiling, ENY-P4-Ceiling
- For floor installation ENY-P1-Floor, ENY-P2-Floor, ENY-P3-Floor, ENY-P4-Floor

As standard these units come with:

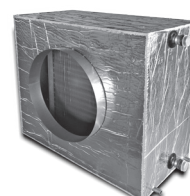
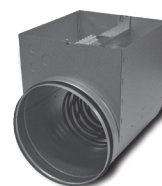
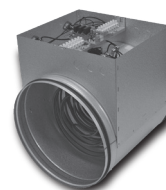
- External double sandwich panels: 24 mm galvanised sheet steel, pre-insulated with PU foam.
- High-performance static heat exchangers with aluminium plates with countercurrent heat exchange.
- Plug-type centrifugal fan: diffusion and extraction with electronically commutated (EC) motor, based on constant rpm.
- Software-based reversibility of the home/outdoor connection.
- Bypass valve with servo control used for the activation of the free cooling and heating.
- F7 ePM1 55% air filter for the supply air.
- Filter dirty detection based on differential pressure controllers.
- 0-10V input contact for variable flow control in accordance with the measured concentration of CO<sub>2</sub> (0-2000ppm)
- Connections for optional control via Modbus.
- T-EP remote control. It must be ordered separately if no building management system is used to control the unit.

- Wired control.
- User set-up menu.
- Installer menu.
- Week programme.
- Filter dirty notification.
- 4 adjustable (%) fan speeds.



## OPTIONS

- Electric preheating coil as an antifreeze strategy.
  - Different types (dimensions, voltage and power) based on the Energy Plus type.
  - Pipe section made of galvanised sheet steel.
  - Modulating control using a PWM signal.
  - Double safety thermostat with automatic and manual reset.
  - IP43 safety class.
- Electric post-heating coil to regulate the indoor temperature.
  - Different types (dimensions, voltage and power) based on the Energy Plus type.
  - Pipe section made of galvanised sheet steel.
  - ON/OFF control.
  - Double safety thermostat with automatic and manual reset.
  - IP43 safety class.
- Hydraulic post-heating coil to regulate the indoor temperature.
  - Pre-heat and pre-cool.
  - Different types (dimensions) based on the Energy Plus type.
  - Galvanised sheet steel with insulated housing.
  - Heat exchanger: 3/8" copper pipe + aluminium fins ( $\Delta=2.5$  mm).
  - Condensate discharge.



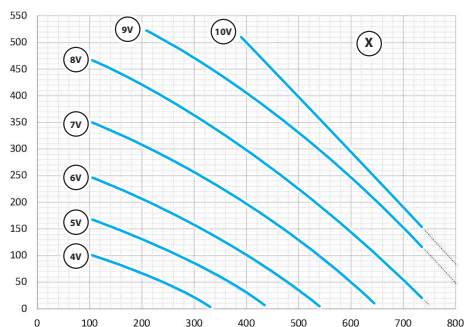
# ENERGY PLUS

## TECHNICAL DATA

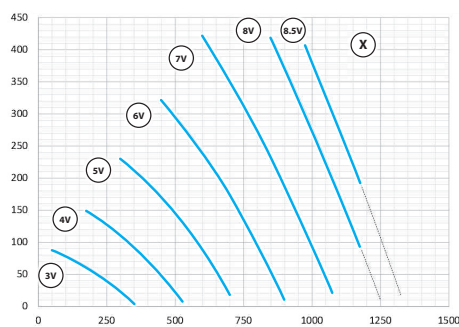
ENERGY PLUS		ENY-P1	ENY-P2	ENY-P3	ENY-P4
Dimensions (l x w x h)	mm	1700 x 850 x 344	1750 x 1150 x 385	2100 x 1250 x 470	2355 x 1700 x 610
Air duct connection	mm	250	250	355	400
Weight	kg	110	154	180	290
Weight incl. packaging	kg	120	164	190	300
Power	V	230	230	230	230
Maximum airflow	m <sup>3</sup> /h	720	1150	1700	2600
Nominal pressure	Pa	170	220	250	250
Efficiency conform EN13141-7	%	80	80	80	85
Efficiency (EN308 Annex G)	%	79% at 325 m <sup>3</sup> /h 77% at 570 m <sup>3</sup> /h 76% at 720 m <sup>3</sup> /h	81% à 520m <sup>3</sup> /h 79% à 806m <sup>3</sup> /h 77% à 1151m <sup>3</sup> /h	81% à 766m <sup>3</sup> /h 79% à 1191m <sup>3</sup> /h 77% à 1700m <sup>3</sup> /h	82% à 1170m <sup>3</sup> /h 82% à 1822m <sup>3</sup> /h 80% à 2600m <sup>3</sup> /h
Power consumption (Energy Performance of Buildings Directive (EPBD))	W	330W	770W	1060W	1460W

## PRESSURE LOSSES

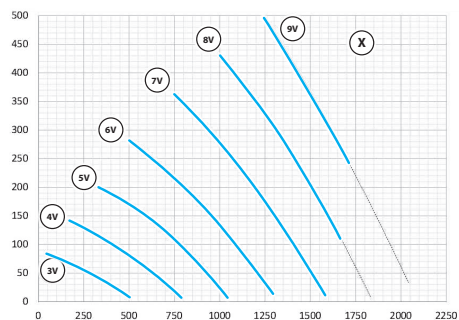
ENY-P1



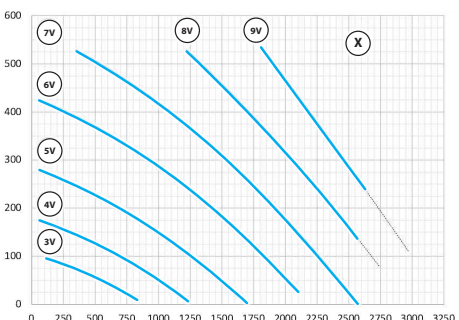
ENY-P2



ENY-P3



ENY-P4

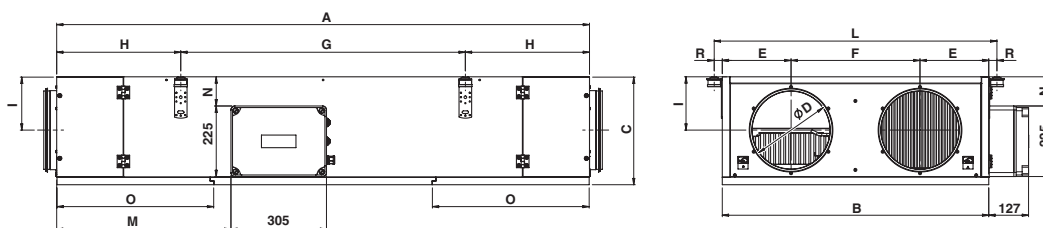


# ENERGY PLUS

## DIMENSIONAL DRAWINGS

DIMENSIONS	ENY-P1	ENY-P2	ENY-P3	ENY-P4
Ø [mm]	250	250	355	400
A [mm]	1750	1750	2100	2355
B [mm]	850	1150	1250	1700
C [mm]	344	385	470	610
D [mm]	250	250	355	400
E [mm]	220	295	325	435
F [mm]	410	560	600	830
G [mm]	908	1108	1328	670 + 670
H [mm]	396	321	386	508
I [mm]	170	190	234	305
L [mm]	902	1202	1302	1740
M [mm]	556	581	758	885
N [mm]	93	134	219	359
O [mm]	500	500	580	580
P [mm]	1388	1438	1788	1032 + 1012
Q [mm]	482	782	882	1332
R [mm]	26	26	26	20
S [mm]	654	678	791	856

ENY-P1-Ceiling, ENY-P2-Ceiling, ENY-P3-Ceiling, ENY-P4-Ceiling



ENY-P1-Floor, ENY-P2-Floor, ENY-P3-Floor, ENY-P4-Floor

