

# D275 III

## Description

Vasco D275 III ventilation units are heat recovery ventilation units suitable for permanent, continuous mechanical ventilation.

### General characteristics

- Suitable for wall and ceiling mounting
- Indoor air duct connections at the top
- Outdoor air duct connections at the bottom
- 4x galvanised connection sleeves included
- Enclosure with internal airtight EPP (expanded polypropylene) construction
- Option to connect up to 3 ventilation units to one or more control panels
- Option to connect up to 20 RF switches (3-position / CO<sub>2</sub> / RH) to a single ventilation unit

### Ventilation & control

- DC radial fans with backward-curved blades
- Automatic, pressure-independent position control for a constant air flow rate
- Fully automatic bypass (summer night ventilation)
- 3-position switches for external control

### Heat exchanger

- High Efficiency Plastic Heat Exchanger

### Control & communication

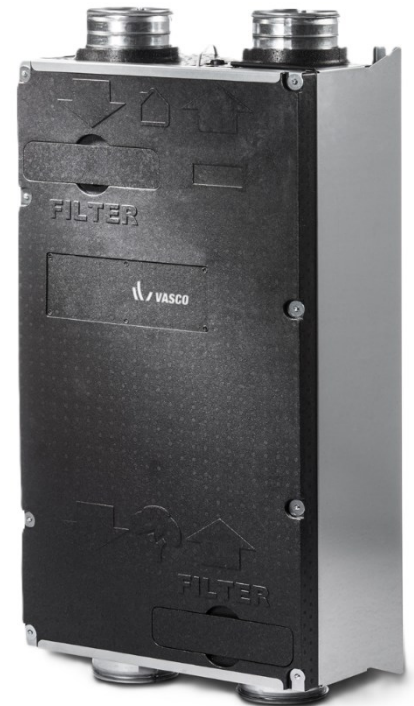
- RF 3-position switch:
  - Wall mounting (surface-mounted)
  - 3 ventilation speeds + Timer function + Auto mode
  - Adjustable maximum airflow
  - LED feedback
  - Battery powered (3V Lithium CR2450N)
- Possibility of combination with multiple RF switches
- 1-10 V control for external systems
- Alarm output for faults / filter notification

### Filters

- Supply side: F7 (EN779 – ISO16890: ePM1 55%)
- Discharge side: G4 (EN779 – ISO16890: Coarse 65%)

### Accessories

- Dry siphon included
- RF 3-position switch included



# D275 III

## Optional Extensions

- Electric preheating elements:
  - PTC-element
  - Modulating control
  - Power: 0.9 kW
  - Surface Mount (DN150)
- Additional RF 3-position switches
- Demand control via RF RH (humidity) switch (2x1.5V AA battery powered)
- Demand control via RF CO<sub>2</sub> surface-mounted switch (1x230V + N power supply)
- Control via Vasco Climate Control App via Gateway



RF 3-position switch



RF CO<sub>2</sub> switch



RF RH switch



Gateway for  
Vasco Climate Control App



Preheating element

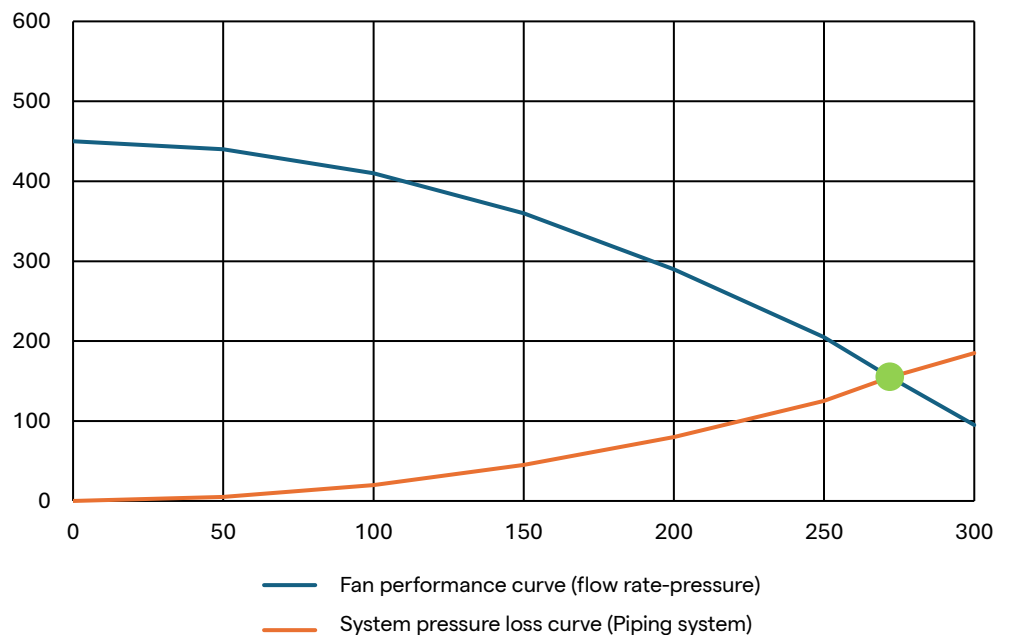
# D275 III

## Technical data

	D275 III
Dimensions (h x w x d)	1180 x 592 x 300 mm
Dimensions incl. packaging (h x w x d)	1210 x 745 x 330 mm
Weight	23 kg
Supply voltage	230 V AC
Maximum air flow rate at 150 Pa	275 m <sup>3</sup> /h
Thermal efficiency according to EN13141-7	93.8%
Thermal efficiency according to EN308 appendix G	80% at 275 m <sup>3</sup> /h 83% at 251 m <sup>3</sup> /h 84% at 200 m <sup>3</sup> /h 85% at 172 m <sup>3</sup> /h
Power consumption	2 x 83 W
Energy label	A
Energy label with 2 sensors (CO <sub>2</sub> or RH (moisture))	A+
Unit Noise Level Emission (70% Q <sub>max</sub> @50 Pa)	52.0 dB(A)
Noise level supply duct (70% Q <sub>max</sub> @50 Pa)	62.0 dB(A)
Exhaust duct noise level (70% Q <sub>max</sub> @50 Pa)	57.0 dB(A)

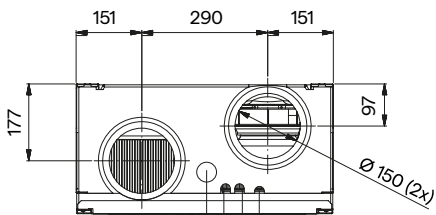
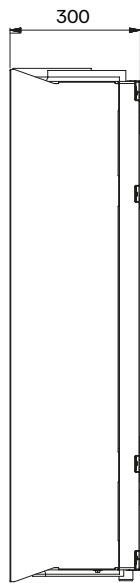
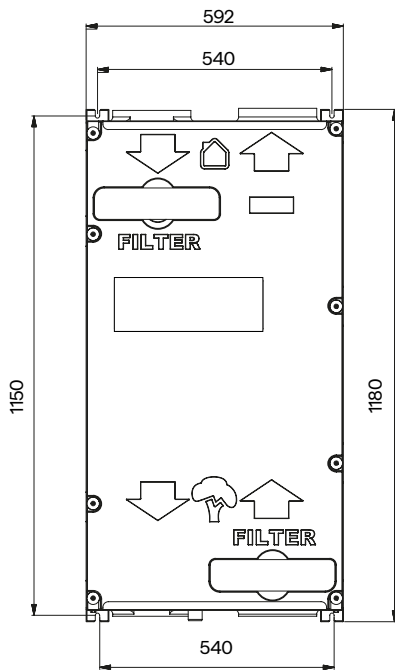
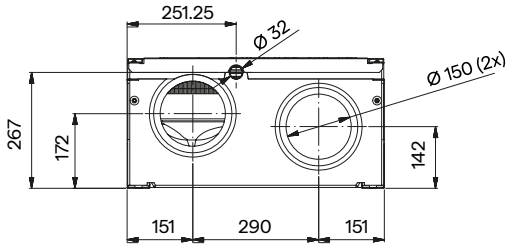
Indicative electrical power consumption D275 III		
Q [m <sup>3</sup> /h]	P [Pa]	P [W]
275	200	164
	175	154
	150	144
	125	138
	100	128
250	200	148
	175	132
	150	127
	125	115
	100	109
225	200	119
	175	111
	150	105
	125	97
	100	92
200	200	109
	175	104
	150	94
	125	88
	100	76
175	200	95
	175	90
	150	83
	125	76
	100	67

Graph D275 III



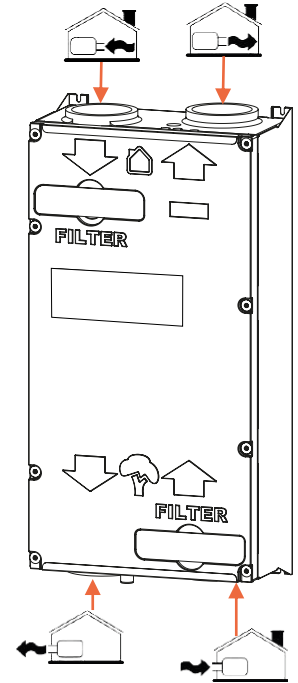
# D275 III

## Dimensional drawings and connections



- 230 V mains lead
- Antenna
- Cable gland for a wired 3-position switch or 1-10 V control cable (both cables must be supplied by the installer)
- Connection for optional electric preheating element

## Standard configuration



Dimensions in mm