

# D275 III

## DESCRIPTION

Vasco D275 III ventilation units are of the heat recovery type and are suitable for permanent, continuously running mechanical ventilation.

As standard these units are equipped with:

- the possibility of wall- or ceiling-mounting
- indoor air duct connections at the top
- outdoor air duct connections at the bottom
- galva connection sleeve (4 pieces)
- internal airtight EPP (expanded polypropylene) construction
- high efficiency plastic heat exchanger
- direct current radial fans with backward curved blades
- constant air flow rate through automatic and pressure-independent speed control
- modulating and automatic bypass (summer night ventilation)
- alarm contact
- 3-position contacts for external control
- 0-10 V signal for external control (by a home automation system, for example)
- a F7 filter for the supply side and a G4 filter for the exhaust side, filters in accordance with EN779-ISO16890 F7- ePM1 55%, G4- COARSE 65%
- the possibility of combining up to 3 ventilation units on one or more controls
- the possibility of combining up to 20 RF switches (3 positions/CO<sub>2</sub>/RH (humidity)) with 1 ventilation unit
- dry siphon
- RF 3-position switch:
  - wall mounting structure
  - 3 ventilation positions + Timer position + Auto position
  - set maximum airflow
  - LED feedback
  - battery powered (3V Lithium CR2450N)



## OPTIONS

- Electric preheating element
- Extra RF switches
- Demand response via RH (humidity) RF remote control (2x1.5V AA)
- Demand response via CO<sub>2</sub> RF remote control (1x230V+N)
- Control via Timer module with LCD display (1x230V+N)
- Control via Vasco Climate Control App (Gateway)



Preheating element



RF switch



RH RF remote control



CO<sub>2</sub> RF remote control



Timer module



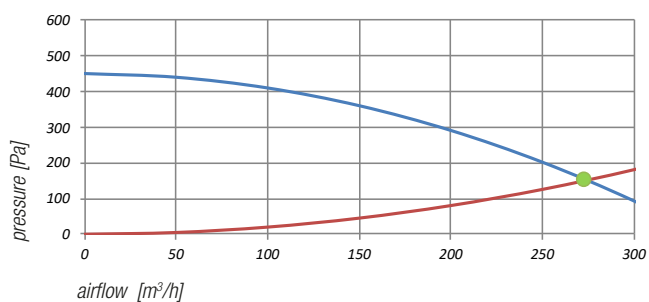
Gateway for Vasco Climate Control App

# D275 III

## TECHNICAL DATA

		<b>D275 III</b>		
Dimensions (hwxwd)	mm	1183 x 592 x 300		
Weight	kg	23		
Supply voltage	V	230		
Maximum airflow at 150 Pa	m <sup>3</sup> /h	275		
Efficiency conform EN 13141-7	%	93,8%		
Efficiency in accordance with EN308 annex G	%	85% at 172 m <sup>3</sup> /h		
	%	84% at 200 m <sup>3</sup> /h		
	%	83% at 251 m <sup>3</sup> /h		
	%	80% at 275 m <sup>3</sup> /h		
Energy consumption (EPBD)	W	2 x 83		
Energy label		A		
Energy label with 2 sensors (CO <sub>2</sub> or RH (humidity))		A+		
Sound power at 70% Q <sub>vmax</sub> at 50 Pa	dB	52		
Fan mode		1	2	3
Capacity	m <sup>3</sup> /h	69	138	275
Pressure	Pa	15	42	150
Power	W	12	34	144
Electric current	A	0,15	0,33	1,17

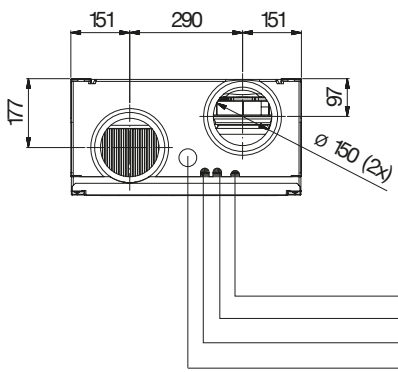
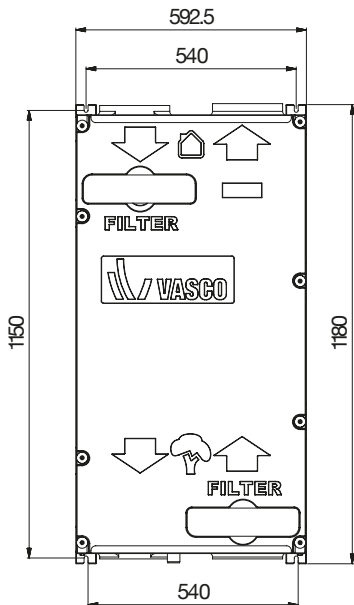
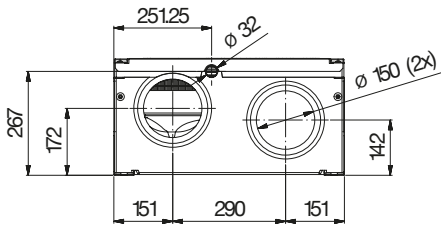
GRAFH D275 III



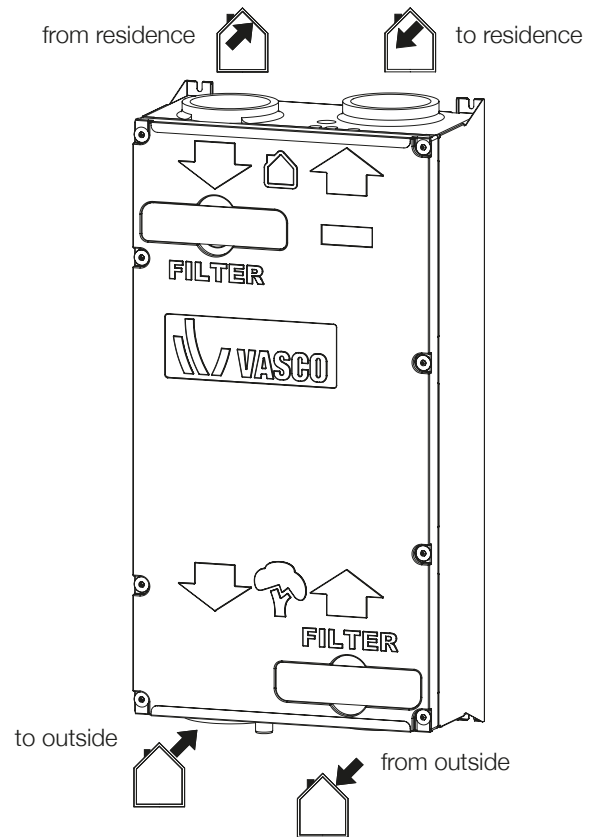
Indicative electrical power consumption D275 III			Indicative electrical power consumption D275 III		
Q [m <sup>3</sup> /h]	P [Pa]	P [W]	Q [m <sup>3</sup> /h]	P [Pa]	P [W]
275	200	164	225	200	119
	175	154		175	111
	150	144		150	105
	125	138		125	97
	100	128		100	92
250	200	148	200	200	109
	175	132		175	104
	150	127		150	94
	125	115		125	88
	100	109		100	76
175	200	95	175	200	95
	175	90		175	90
	150	83		150	83
	125	76		125	76
	100	67		100	67

# D275 III

## DIMENSIONAL DRAWINGS AND CONNECTIONS



- Main cable 230VAC
- Antenna RF
- Grommet cable wired 3-position switch or cable 0-10V control (both cables to be provided by the installer)
- Connection of optional electrical preheating element



Dimensions in mm