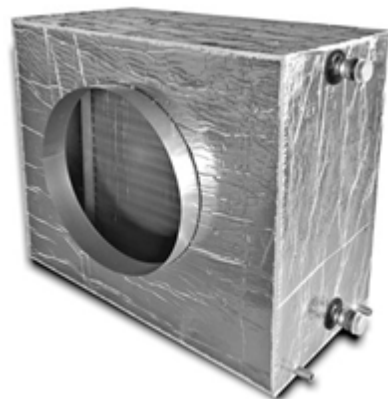


HYDRAULIC BATTERY ENERGY PLUS

DESCRIPTION

The hydraulic battery enables the temperature of the supply air to be controlled (heated/cooled) by a heat exchanger. The hydraulic battery operates and is controlled by the temperature of the supply air or the discharge air.



OPERATION

The system switches ON/OFF to achieve the heating or cooling setting of the supply air. The standard setting is 20°C for heating and 26°C for cooling. The hydraulic battery (water shut-off valve) can be switched on if the following settings on the printed circuit board of the Energy Plus ventilation unit are configured as follows:

- DIP-switch 4 is ON
- DIP-switch 5 is ON
- DIP-switch 10 is ON: Post-processing controlled by the supply temperature (after the heat exchanger)
- DIP-switch 10 is OFF: Post-processing controlled by the discharge temperature (before the heat exchanger)

If the system is controlled by the supply temperature, it will be necessary to reposition the PT1000 sensor installed on this supply air (T2) (See technical drawing under chapter "Dimensional Drawing and Connections") to ensure it is positioned after the hydraulic battery. This PT1000 sensor must be supplied separately.

TECHNICAL SPECIFICATIONS

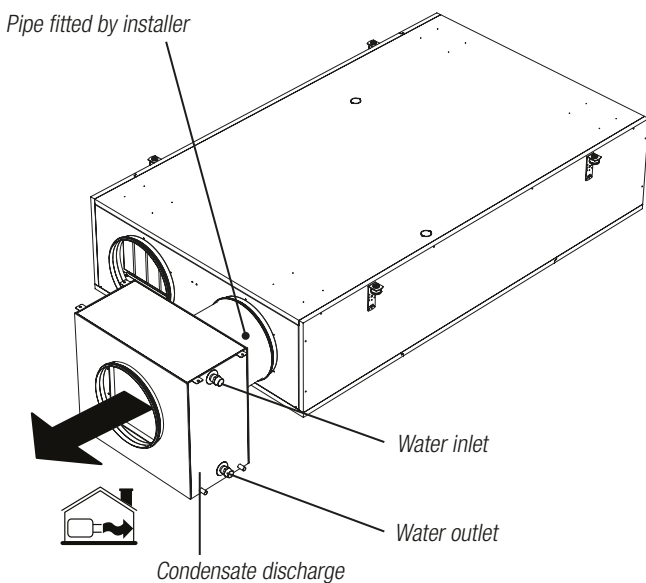
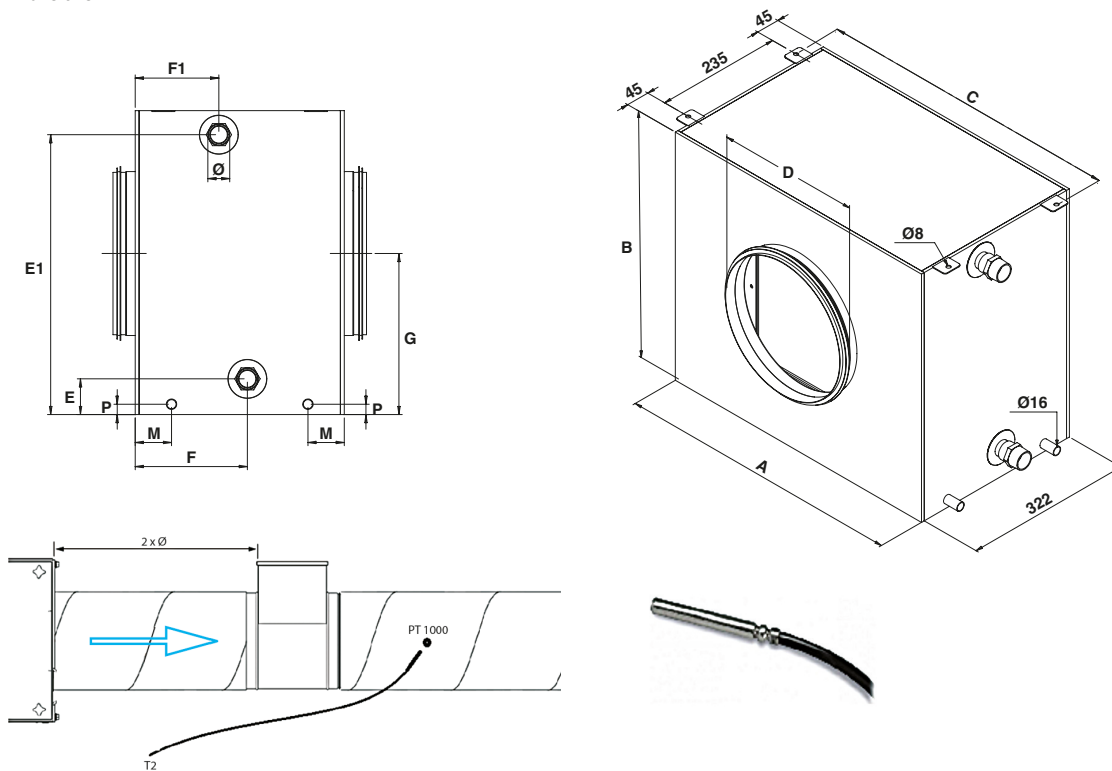
- To be fitted externally, in the air duct with airflow 'towards the home'
- Housing of high-quality galvanised sheet steel
- Insulated housing
- Heat exchanger: 3/8" copper pipe + aluminium fins ($\Delta=2.5\text{mm}$)
- Condensate discharge 2x16mm (both before and after the heat exchanger)
- Control for 2 or 4 pipework system



HYDRAULIC BATTERY ENERGY PLUS

DIMENSIONAL DRAWING AND CONNECTIONS

Dimensions in mm



Post-processing battery	ENY-P1/2	ENY-P3	ENY-P4
A [mm]	536	645	645
B [mm]	468	568	568
C [mm]	567	676	676
D [mm]	250	355	400
E [mm]	55	55	55
F [mm]	180	180	180
G [mm]	250	250	250
E1 [mm]	431	534	534
F1 [mm]	133	133	133
Water connection Ø [mm]	1" M	1" M	1" M
Condensate discharge Ø [mm]	2x16	2x16	2x16
Condensate discharge M [mm]	56	56	56
Condensate discharge P [mm]	16	16	16

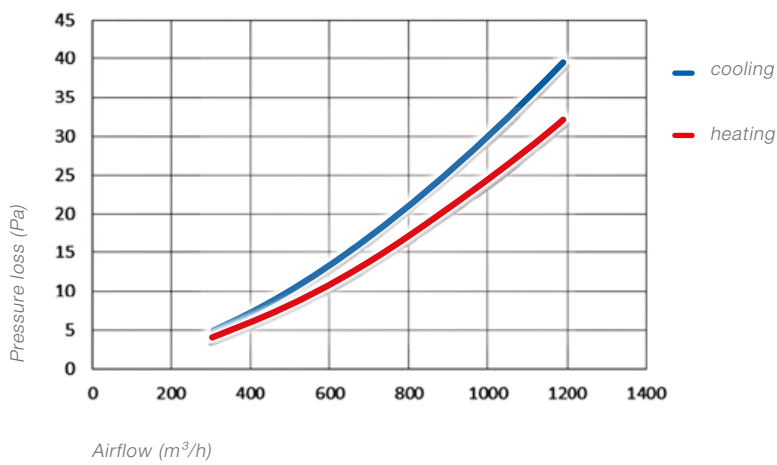


HYDRAULIC BATTERY ENERGY PLUS

DIAGRAM

Pressure losses by hydraulic battery

ENY-P1 / ENY-P2



ENY-P3 / ENY-P4

