

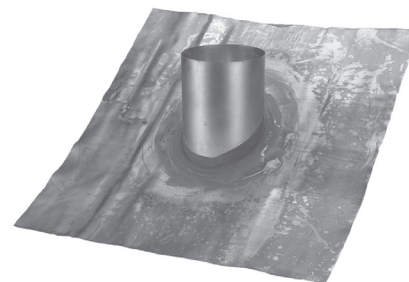


COUNTER FLASHING

DESCRIPTION

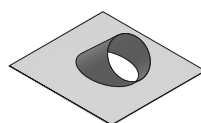
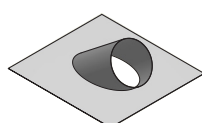
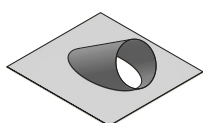
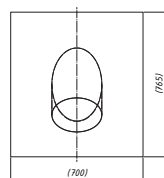
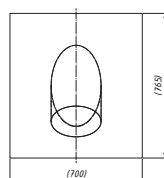
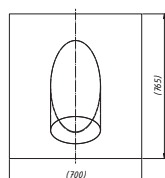
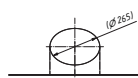
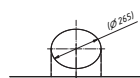
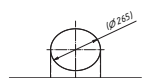
The Vasco insulated air ducts and accessories, together with the other Vasco ventilation products, assure a unique low-noise ventilation system. The insulated parts were developed to meet the ever more stringent requirements for thermal insulation and noise level in living spaces that are set for air-technical installations with heat recovery. These insulated parts must be applied to the outdoor connection of the ventilation system.

The Vasco counter flashing must be applied in order to install a roof feed-through on a pitched roof. The counter flashing has a fixed slope; the proper counter flashing, corresponding to the roof pitch, must be used.



TECHNICAL DATA

Suitable for slope	33° to 37°
	38° to 42°
	43° to 47°
Suitable for air duct	Ø255/200 mm



Dimensions in mm