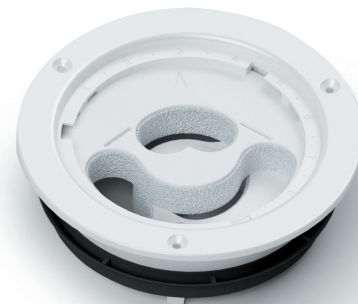


Smiley 2.0 regulating valve

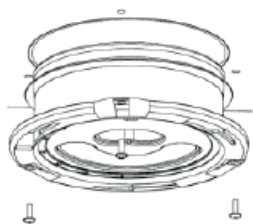
Description

The regulating valve is installed in each room of a home to be ventilated. It functions as supply or exhaust valve, depending on the nature of the room (dry or wet) and regulates the air flow. The regulating valve is infinitely adjustable with a scale between 1-8 and 11-18.

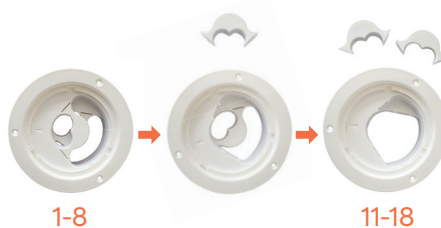


Installation

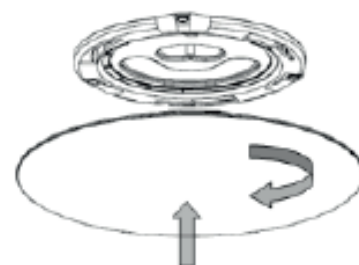
1. Install the volume control in the duct. The valve remains in place by jamming the rubber into the ceiling. If there is a false ceiling, in order to fasten the duct the volume control can be screwed tight into the ceiling with 3 screws.



2. Regulate the ventilation system by adjusting the position of the volume control. Extra positions can be created by breaking out the middle pieces.



3. Place the cover plate on the volume control by means of the bayonet mount.



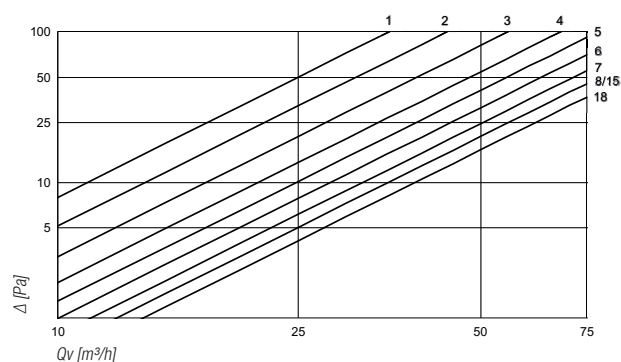
Maintenance

The valves can be cleaned by removing the cover plate. The volume control can remain in the ceiling during the cleaning.

Pressure losses

Graphs of the pressure drop at the different regulating positions. Positions 11-18 are those with the middle piece broken out.

PRESSURE LOSSES DURING EXHAUST



PRESSURE LOSSES DURING SUPPLY

